

394 - LE BLOIS



1,2 storey | 3 bedrooms | 1 bathroom | 1 powder room | 1,740 ft²

Starting at \$313,400

SKU: 394 | Categories: [Cottage](#) |

PRODUCT DESCRIPTION

ARCHITECTURAL STYLE: Chateau New England

DIMENSIONS

First floor area (sq ft): 870 sq ft

Floor area (sq ft): 870 sq ft

Total area (sq. ft.): 1,740 sq. ft.

Garage area (sq. ft.): 294 sq. ft.

Width of house (feet): 26'

Depth of house (feet): 34'-6"

Total height of the house: 34'.

CEILING HEIGHTS

RDC: 8'

Floor: 8

Living room: 8

Dining room: 8

Master bedroom: 8'

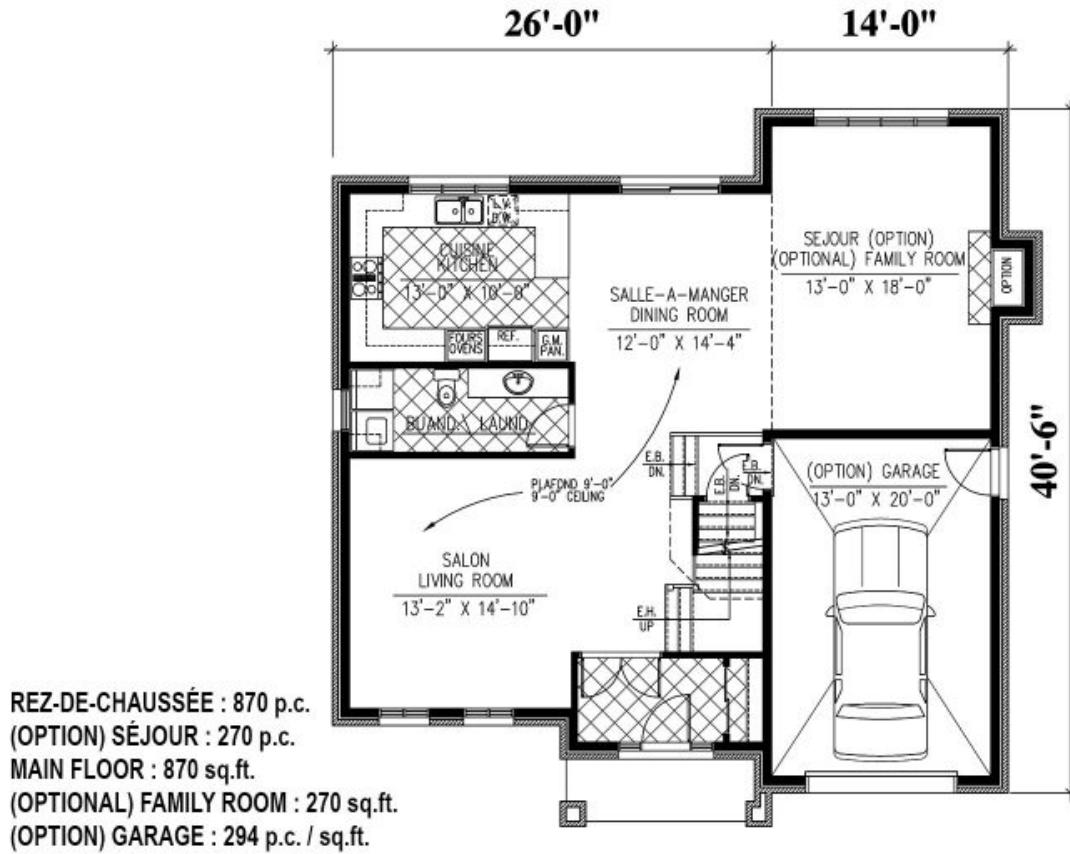
Entrance hall: 8'

GARAGE: With, Without

FEATURES

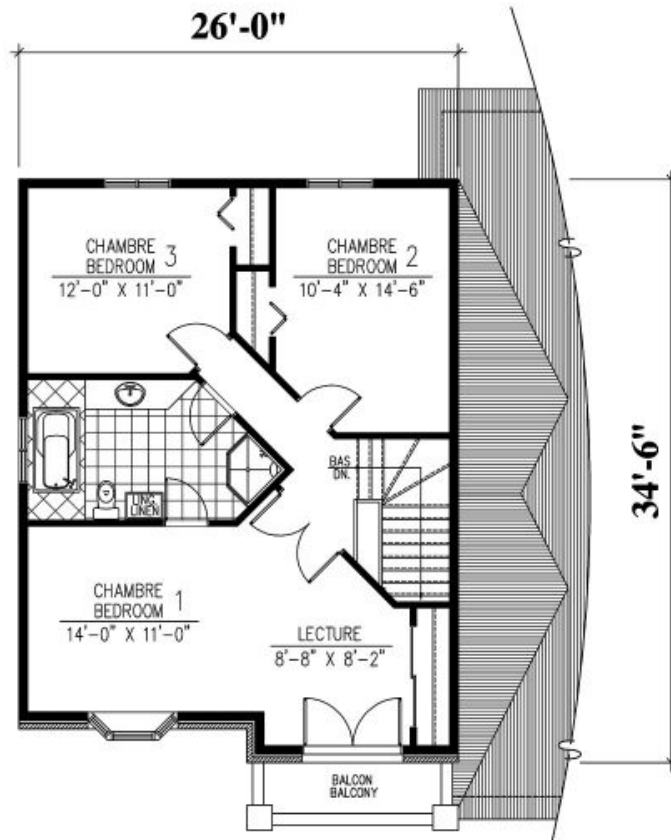
- Access to the bathroom from the master bedroom
 - Pitched roof

- Rear lounge
- Covered balcony
- Balcony upstairs



394 - Le Blois



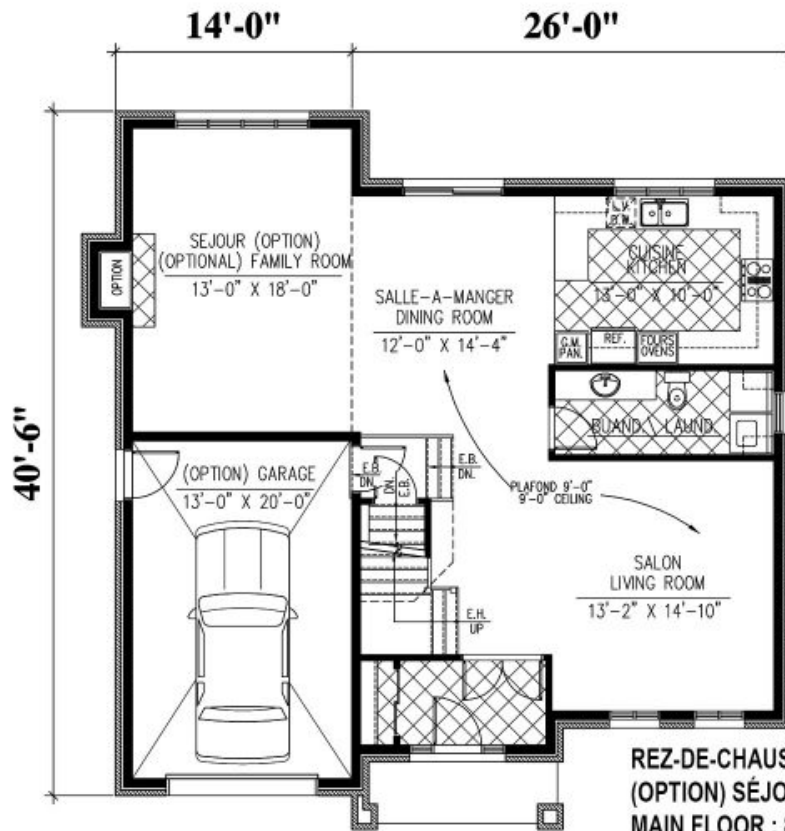


ÉTAGE : 870 p.c.
SECOND FLOOR : 870 sq.ft.

394 - Le Blois





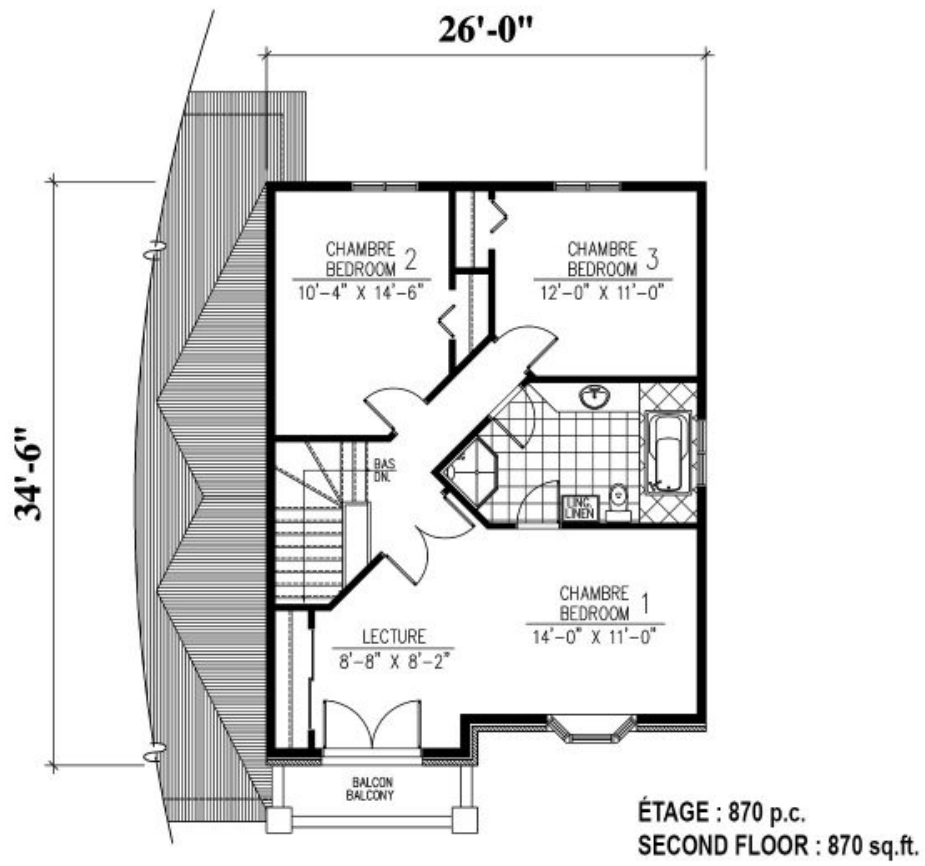


REZ-DE-CHAUSSÉE : 870 p.c.
(OPTION) SÉJOUR : 270 p.c.
MAIN FLOOR : 870 sq.ft.
(OPTIONAL) FAMILY ROOM : 270 sq.ft.
(OPTION) GARAGE : 294 p.c. / sq.ft.



394 - Le Blois

Plan Inversé / Reversed Plan



394 - Le Blois

Plan Inversé / Reversed Plan

