

406 - LE ROYAUMONT



2 floors | 4 bedrooms | 2 bathrooms | 1 powder room | 2,122 sq. ft.

Starting at \$379,500

SKU: 406 | Categories: [Cottage / Bi-Generation](#) |

PRODUCT DESCRIPTION

ARCHITECTURAL STYLE: Country-Rustic

DIMENSIONS

First floor area (sq ft): 1,057 sq ft

Floor area (sq ft): 1,065 sq ft

Total area (sq. ft.): 2,122 sq. ft.

Garage area (sq. ft.): 576 sq. ft.

House width (feet): 32'

Depth of house (feet): 34'

CEILING HEIGHTS

RDC: 8'

Floor: 8

Living room: 8

Dining room: 8

Master bedroom: 8'

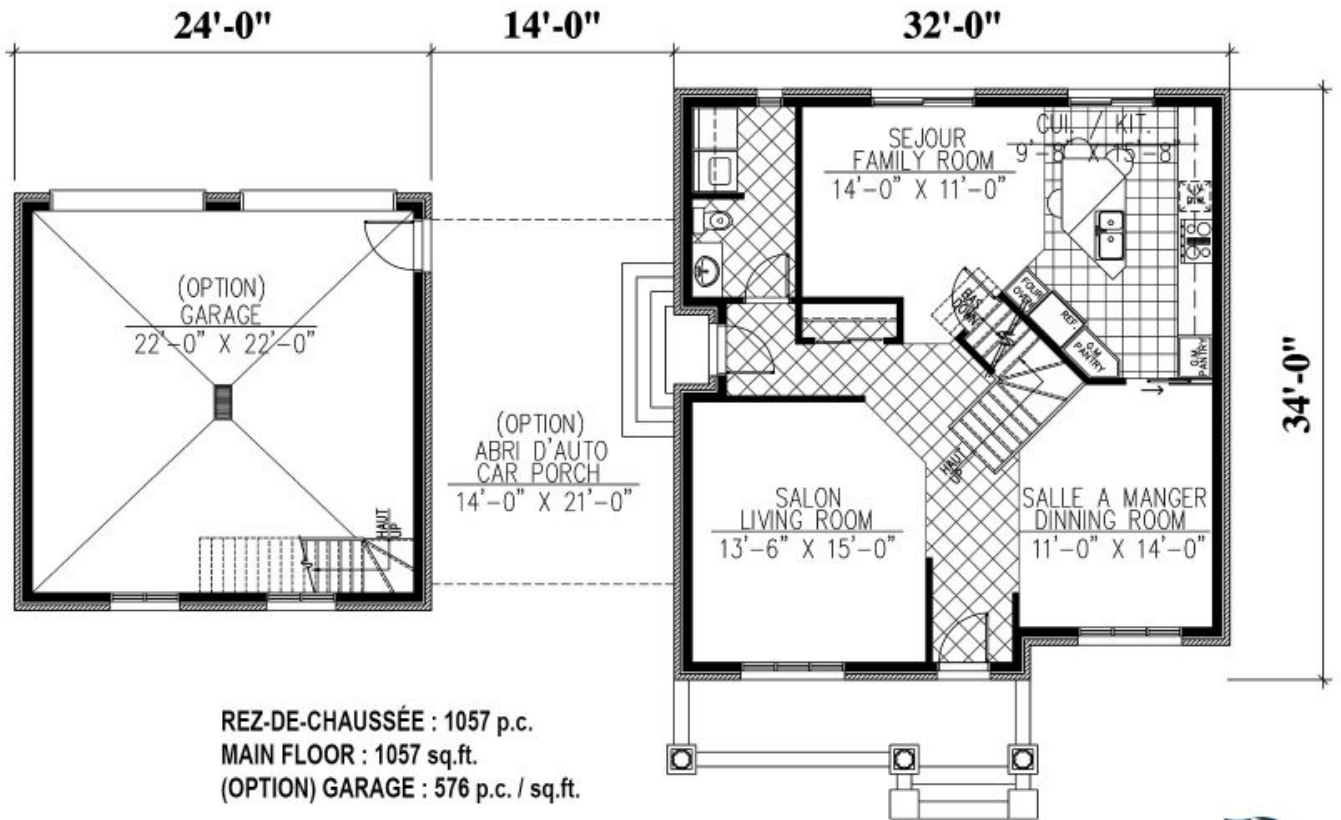
Entrance hall: 8'

GARAGE: With, Without

FEATURES

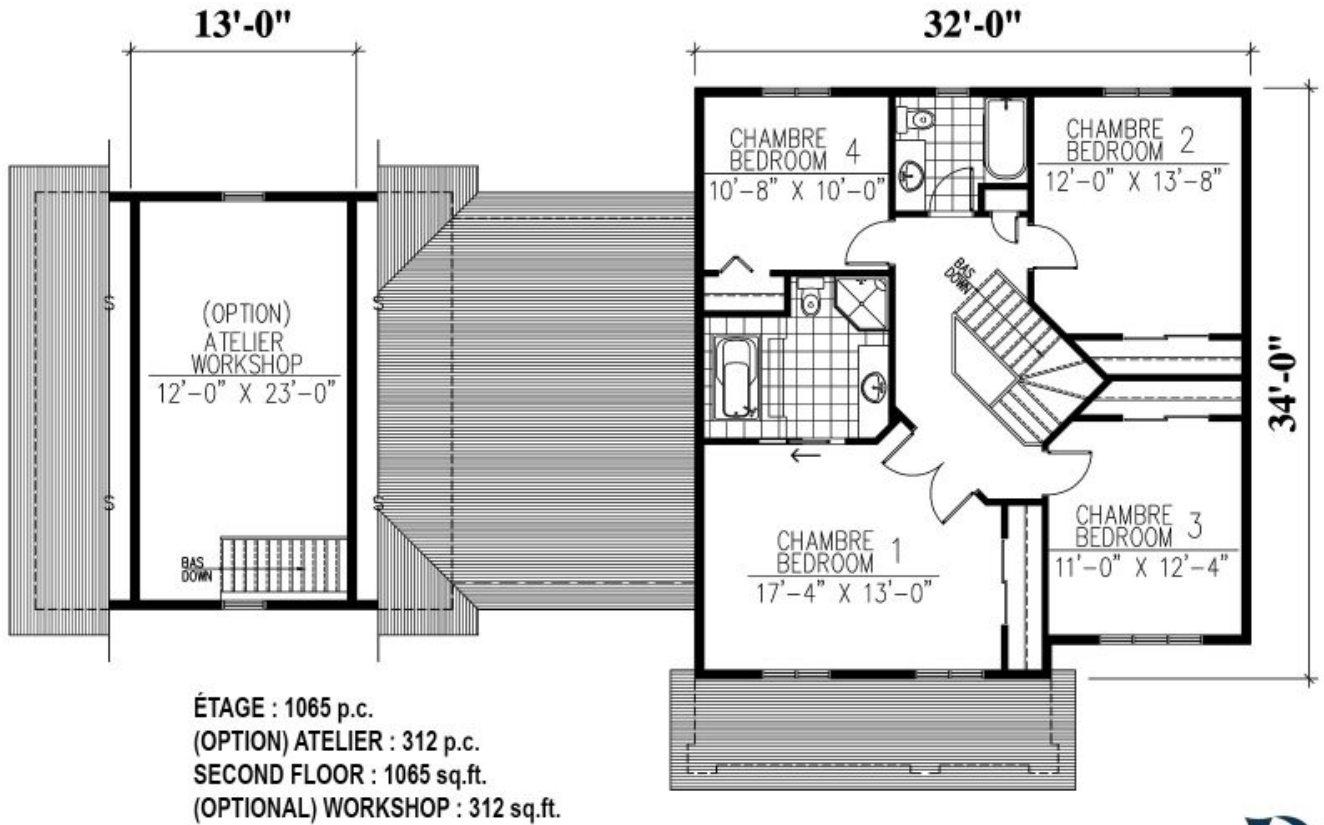
- Carport
- Rear lounge
- Kitchen with island

- Master bedroom with walk-in closet
- Covered balcony



406 - Le Royaumont

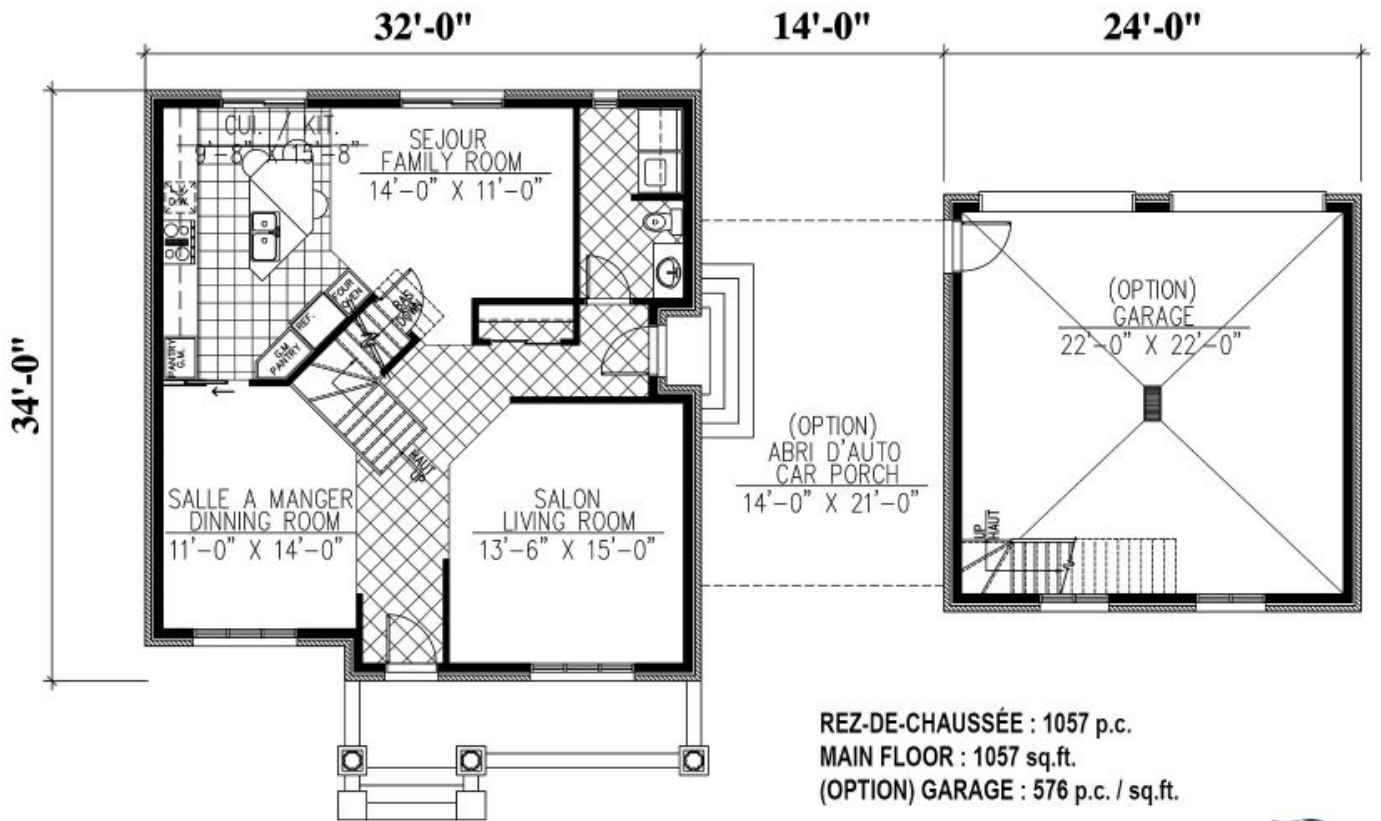




406 - Le Royaumont



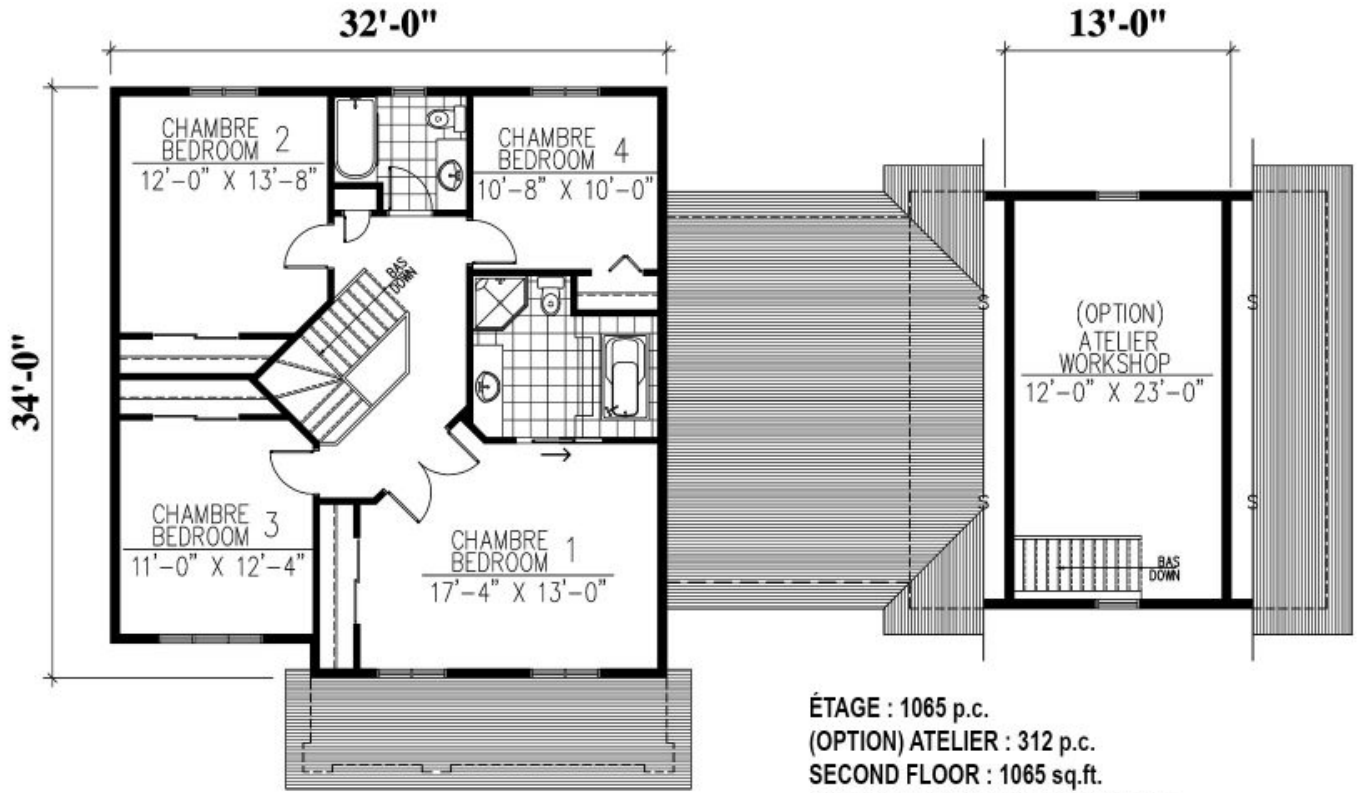




406 - Le Royaumont

Plan Inversé / Reversed Plan





406 - Le Royaumont

Plan Inversé / Reversed Plan

